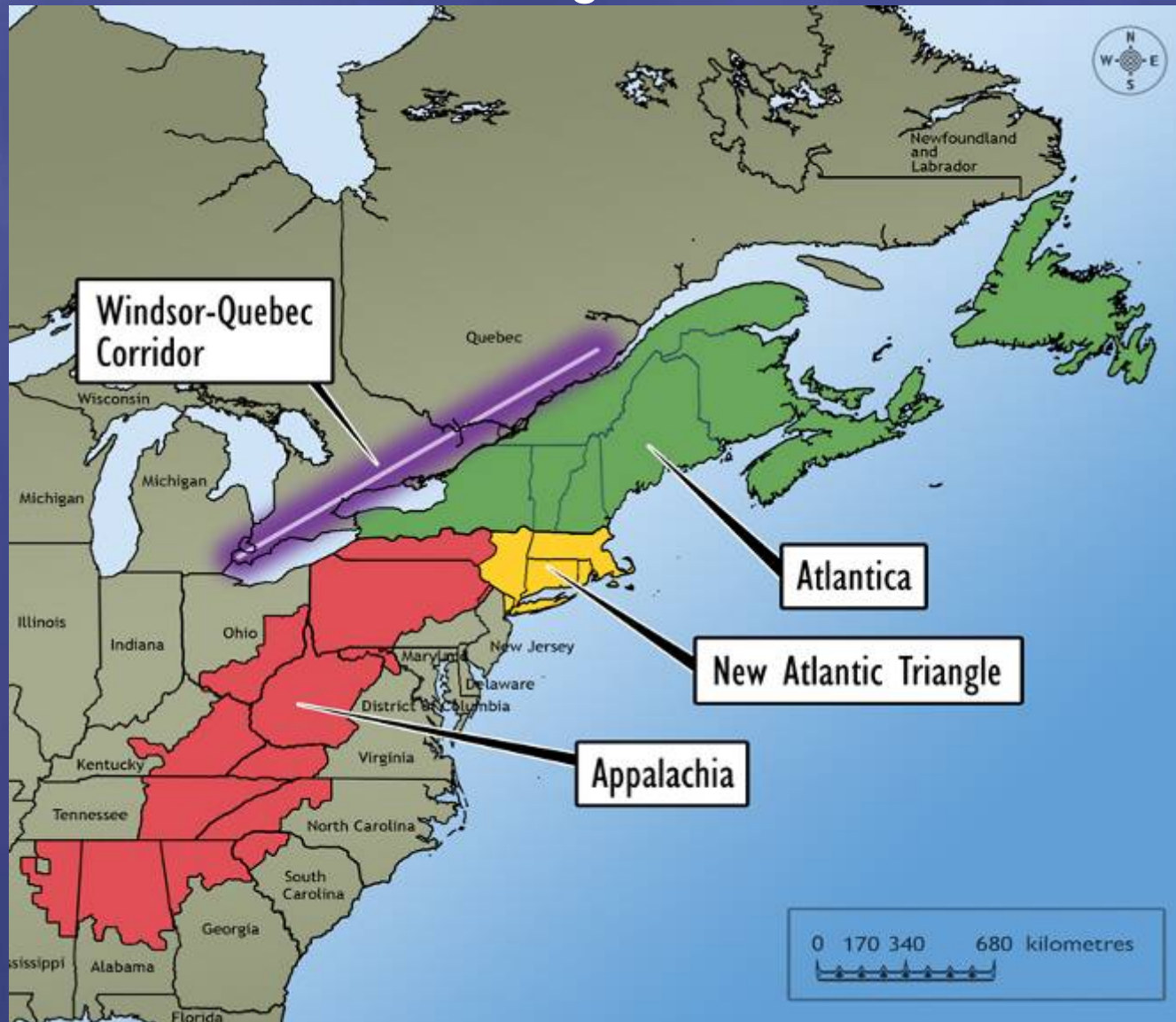


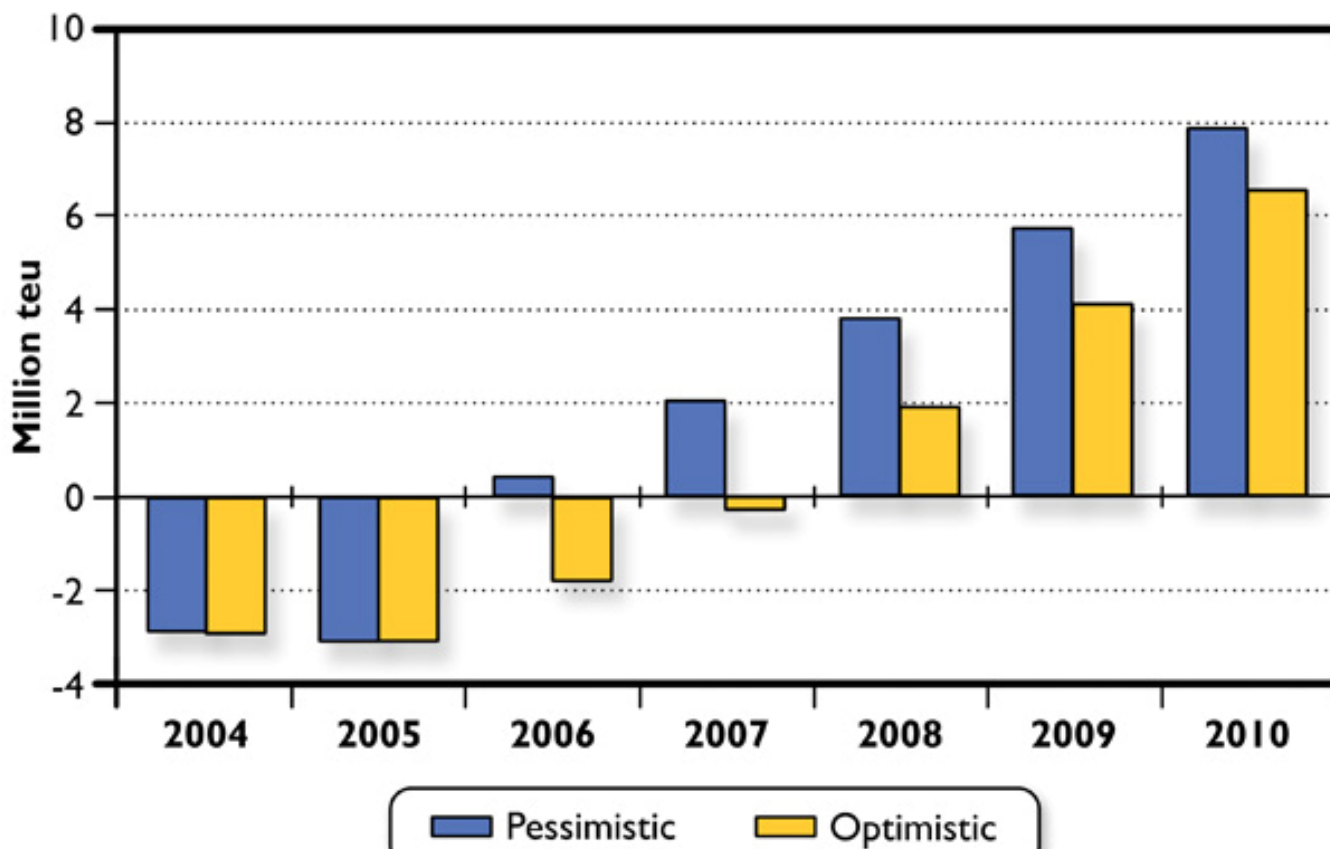
Atlantica: The International Northeast Economic Region



Atlantica: the intersection of three major North American regions

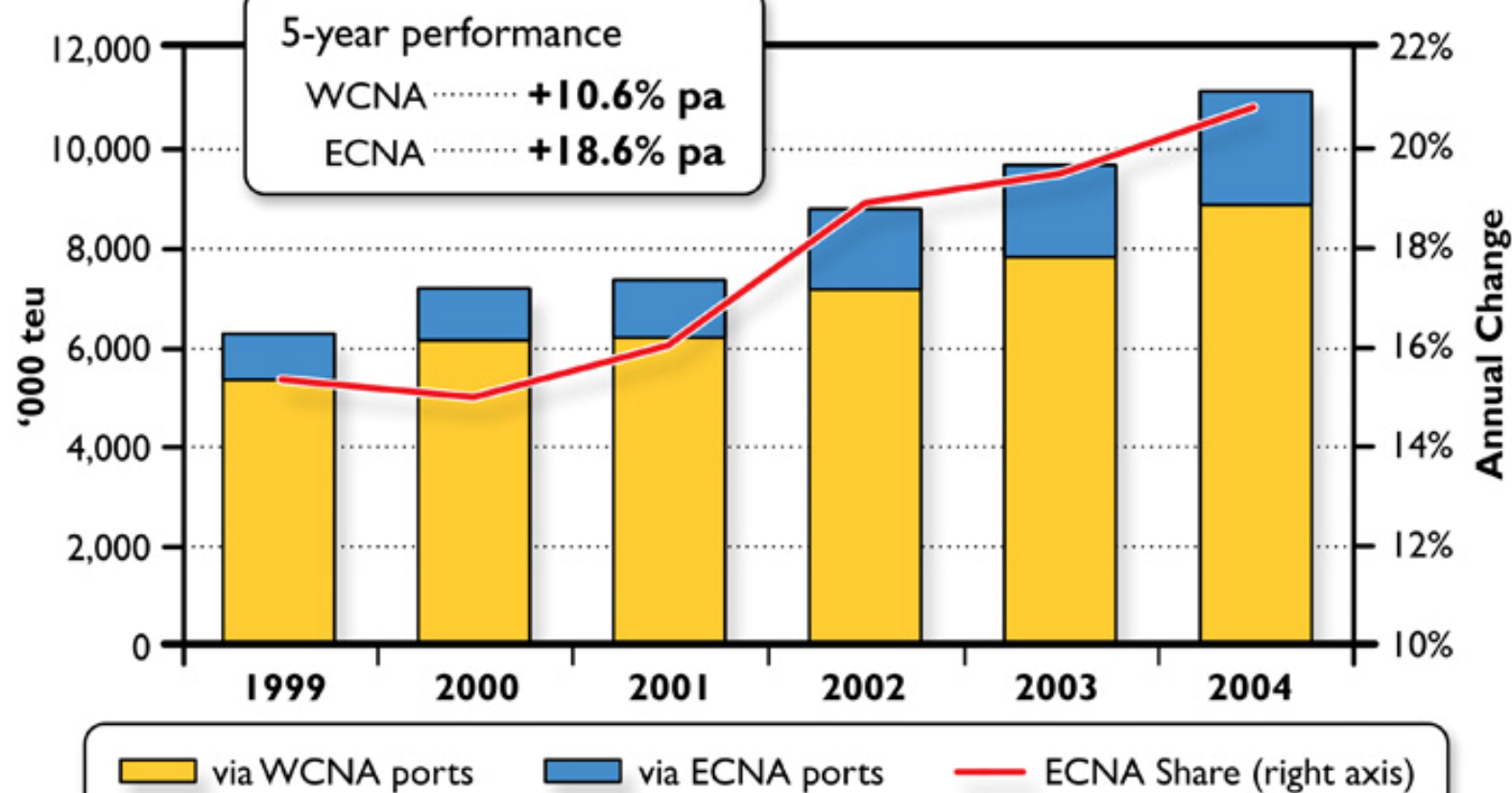


Potential capacity shortage at WCNA ports



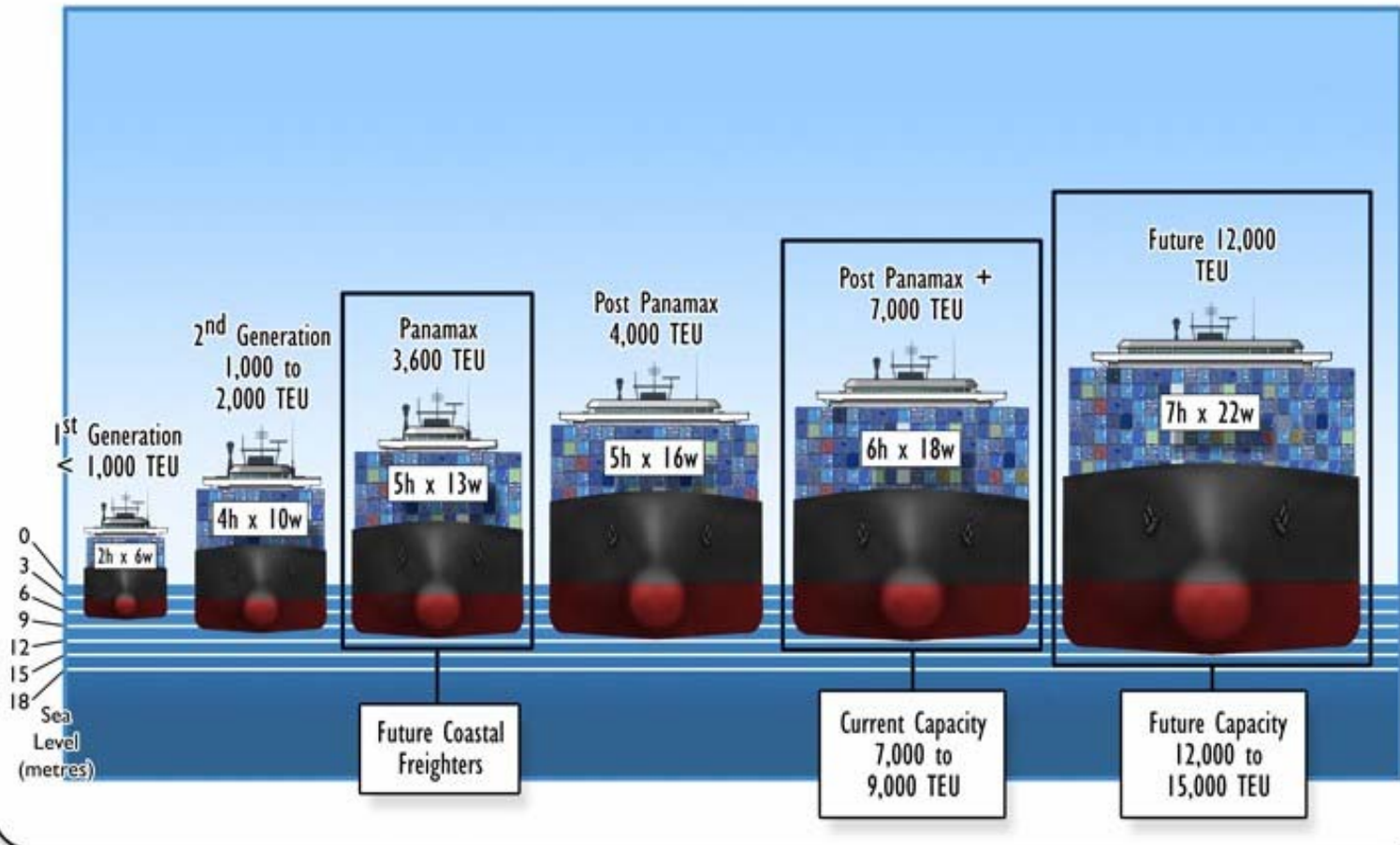
Source: Drewry Shipping Consultants Ltd.

Trans-Pacific eastbound traffic volumes

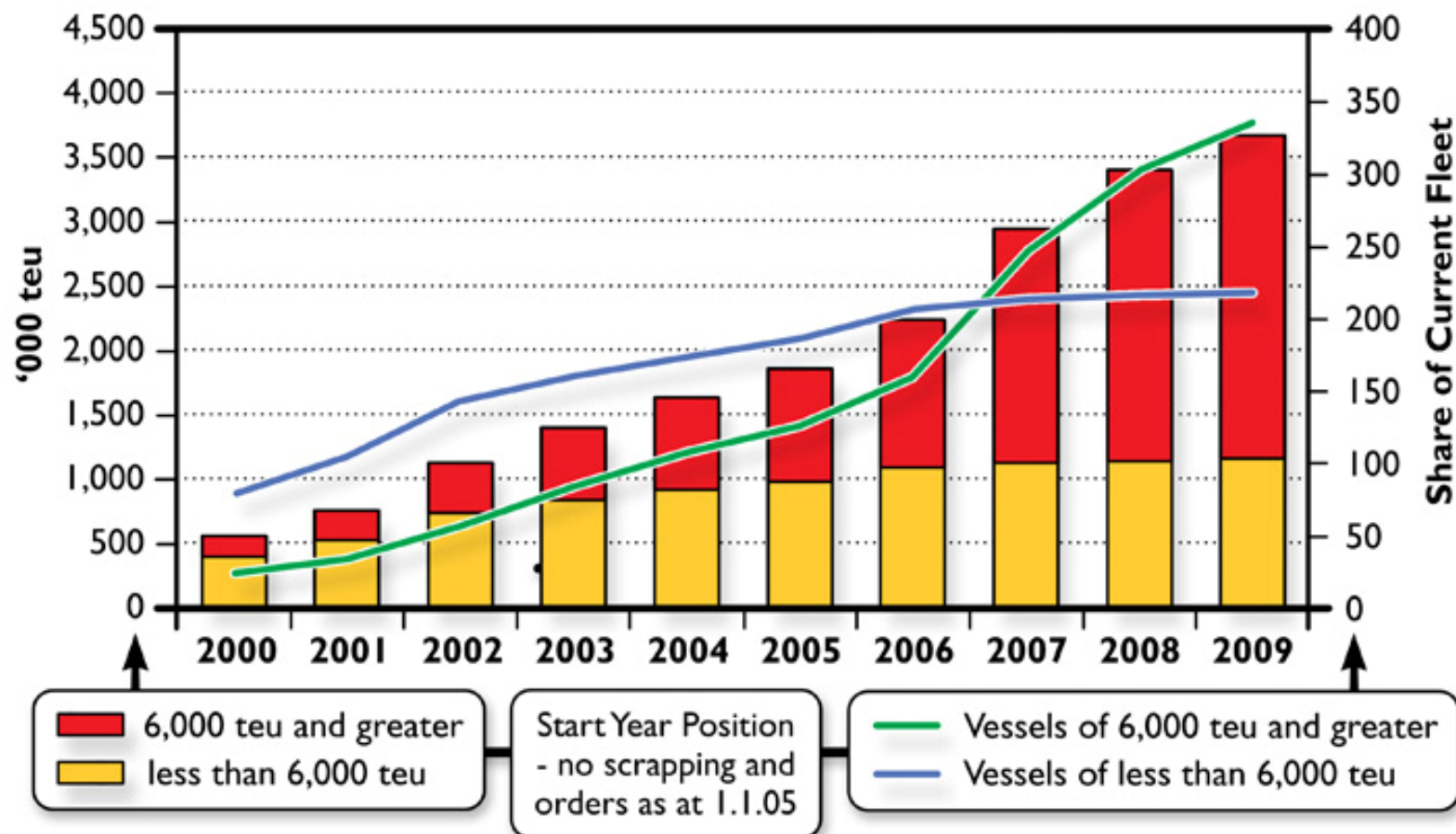


Source: Drewry Shipping Consultants Ltd.

Rapidly Escalating Vessel Size



Projected post-Panamax fleet development



Source: Drewry Shipping Consultants Ltd.

Main Street Atlantica



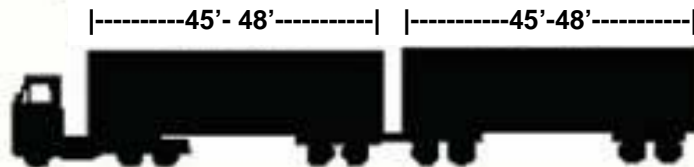
Road Trains

Common LCVs

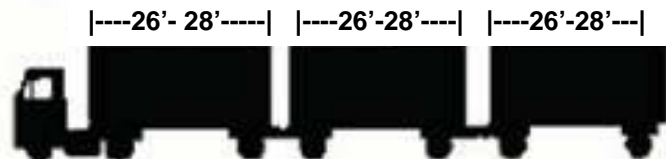
Rocky Mountain Double



Turnpike Double

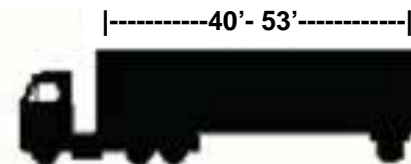


Triple



Common Non-LCV trucks

Combination with Single trailer



Combination with Twin Trailers



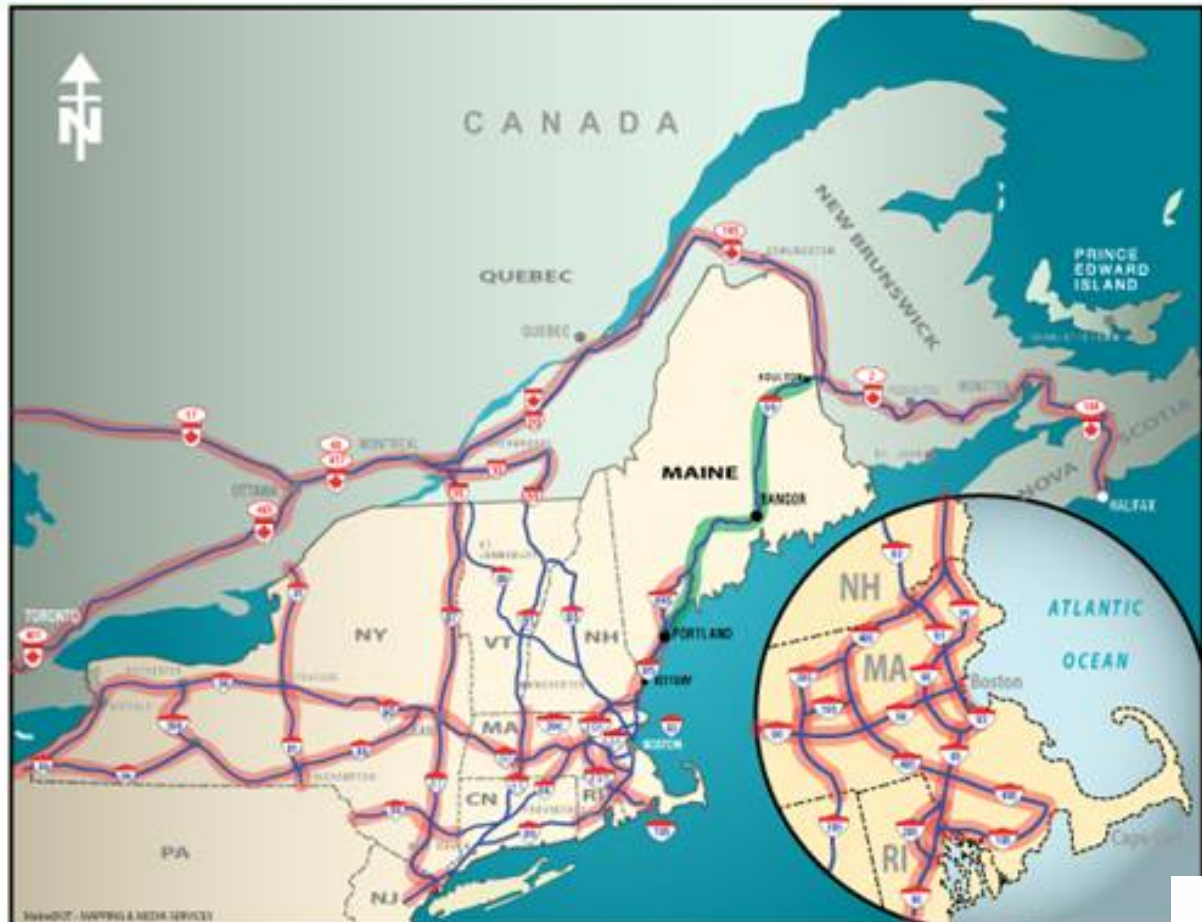
Straight Truck with Trailer Connected with Draw Bar (Lengths Vary)



6 AXLE COMMERCIAL VEHICLE



INTERSTATE /
TRANS-CANADA
HIGHWAYS

MAINE EXEMPTION REQUEST

Coastal Service Network on the East Coast



Welcome to Atlantica

The International Northeast Economic Region (AINER)



[Atlantica Story](#)

[Commentaries](#)

[Events](#)

[Media](#)

[Research](#)

[Links](#)

[Contact](#)

print this page

send to a friend



What's New

AIMS 10th Anniversary Banquet

November 9, 2004

Reflections on our common continental home: AIMS 10th Anniversary Banquet. Former US Senator and Secretary of Defense William Cohen and former Prime Minister Brian Mulroney discuss "A blueprint for security and commerce in Atlantica and the whole of North America"

Atlantica: the International Northeast Economic Region (AINER) is defined chiefly by geography, economic trends and trade patterns; common problems and experiences; and politics. Much of this wedge of territory has been outside the charmed circle of North American prosperity for years.

The reasons are buried deep in our history. Especially after the Americans rejected Reciprocity and Confederation was born, the continent was divided into two national projects. Each sought to open up its half of the continent on an east-west axis. Each had a funnel on the East Coast that caught the energies of Europe and channelled them toward the conquest of the continent.